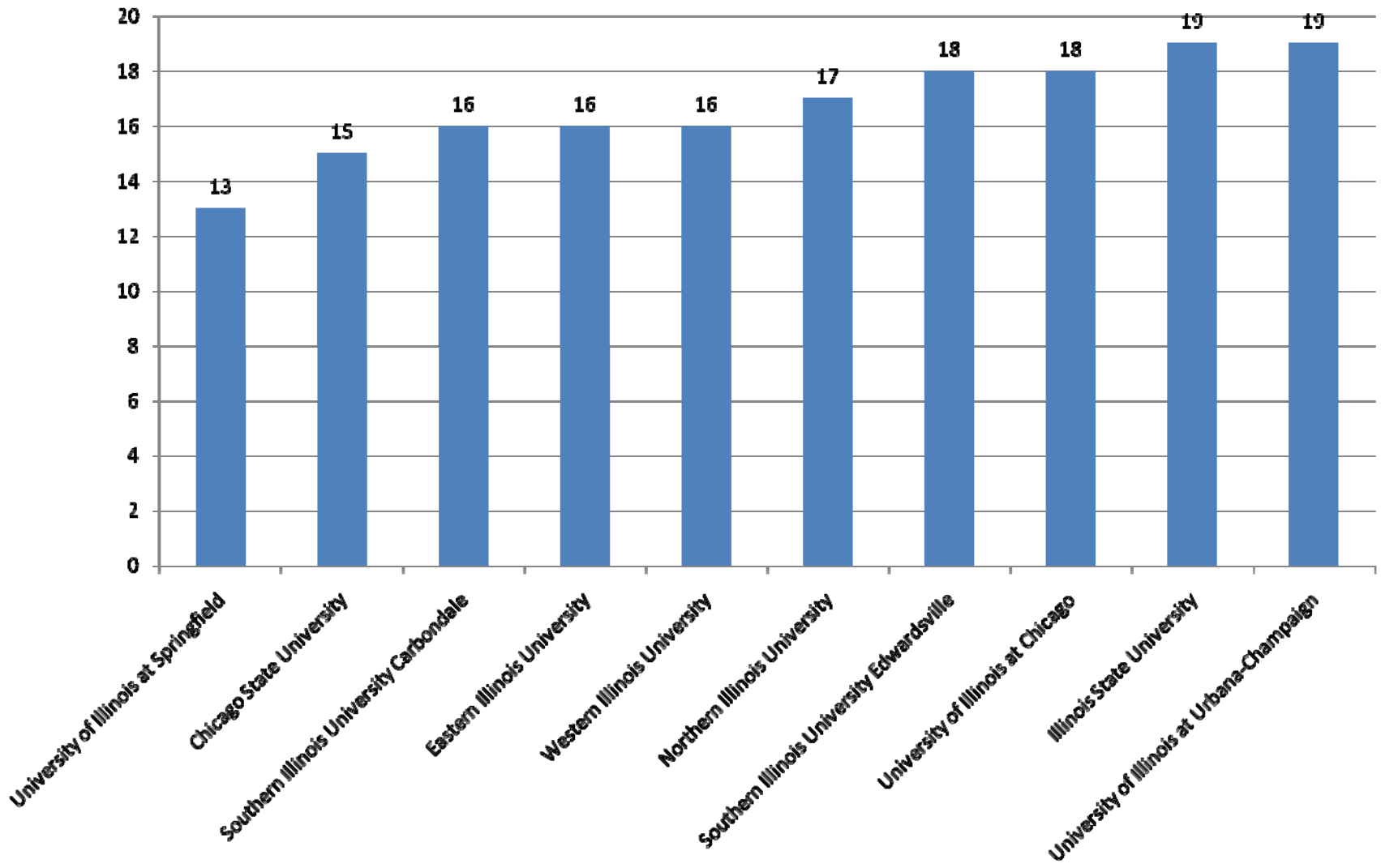
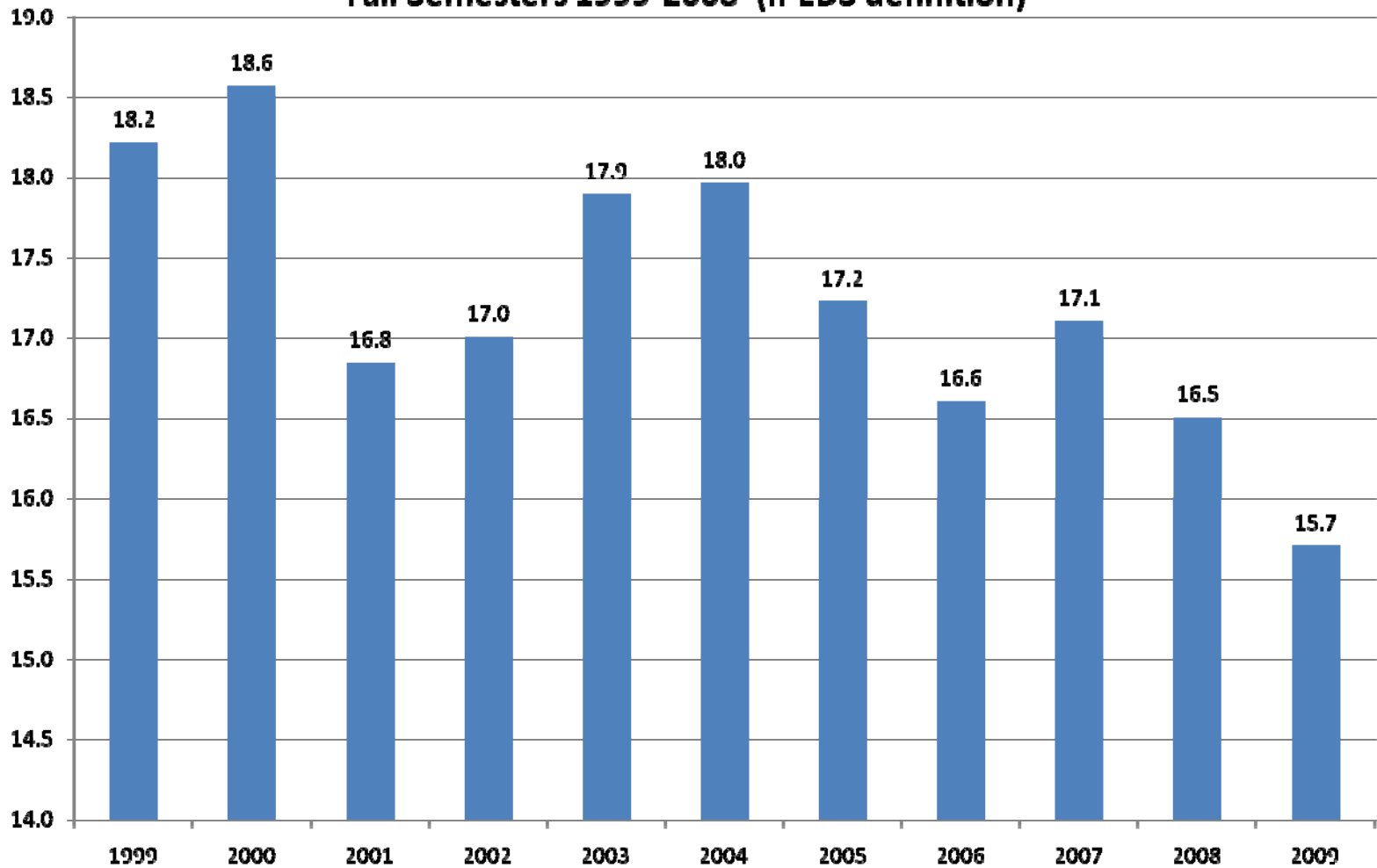


Fall 2009 IPEDS Data for SIUC

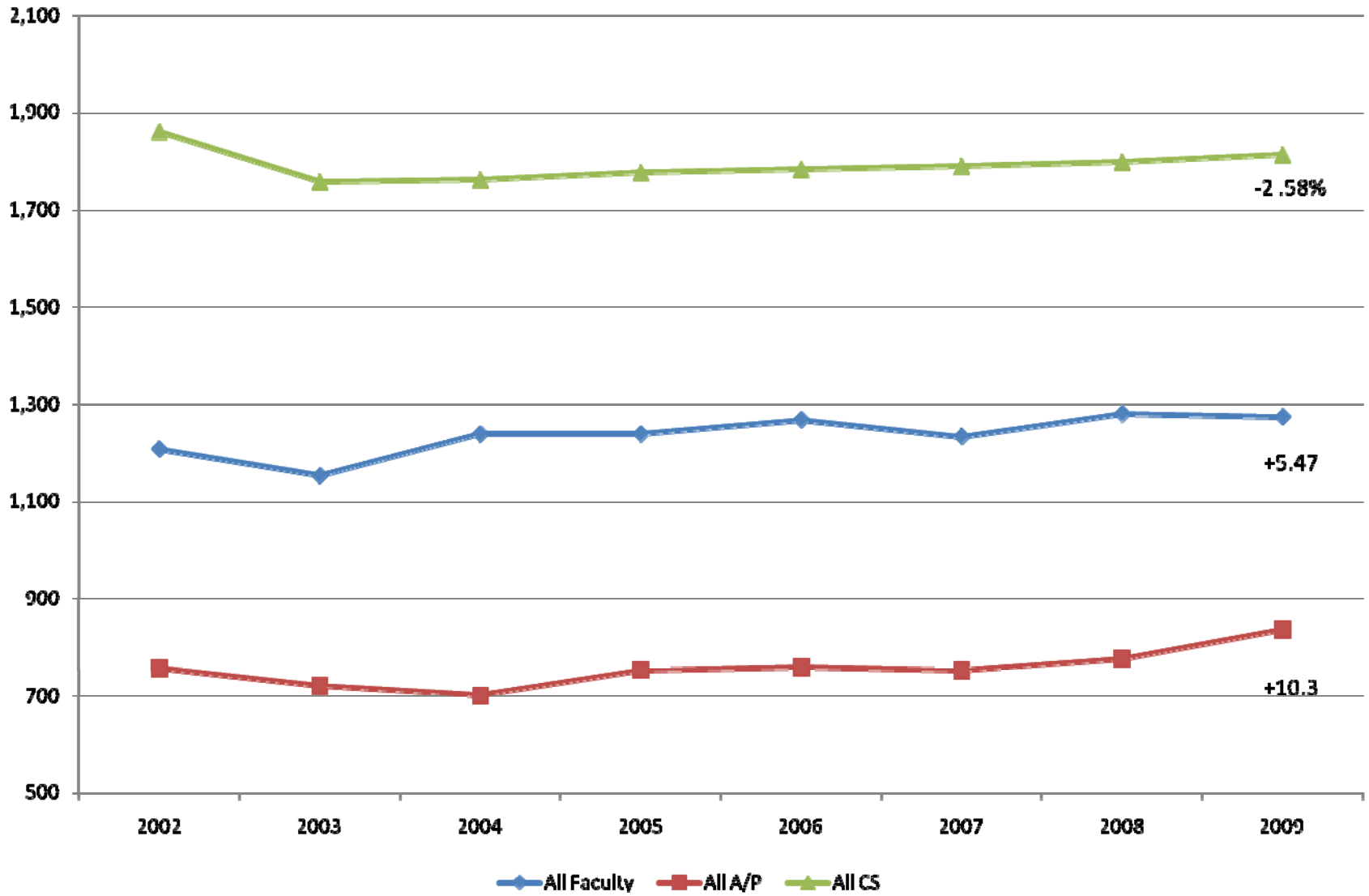
Student/Faculty Ratio Fall 2009 IPEDS Definition



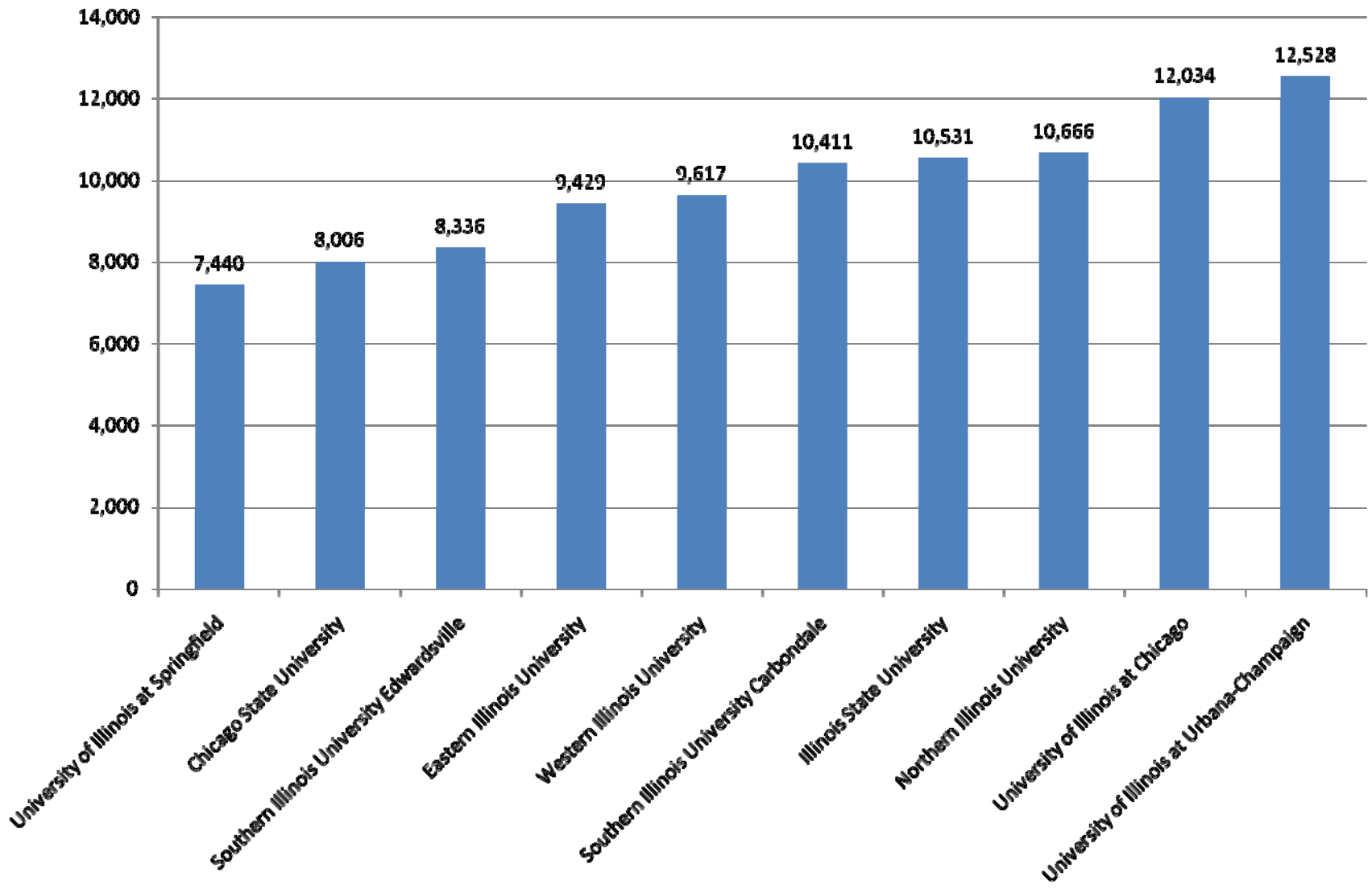
FTE Student/FTE Faculty Ratio Fall Semesters 1999-2008 (IPEDS definition)



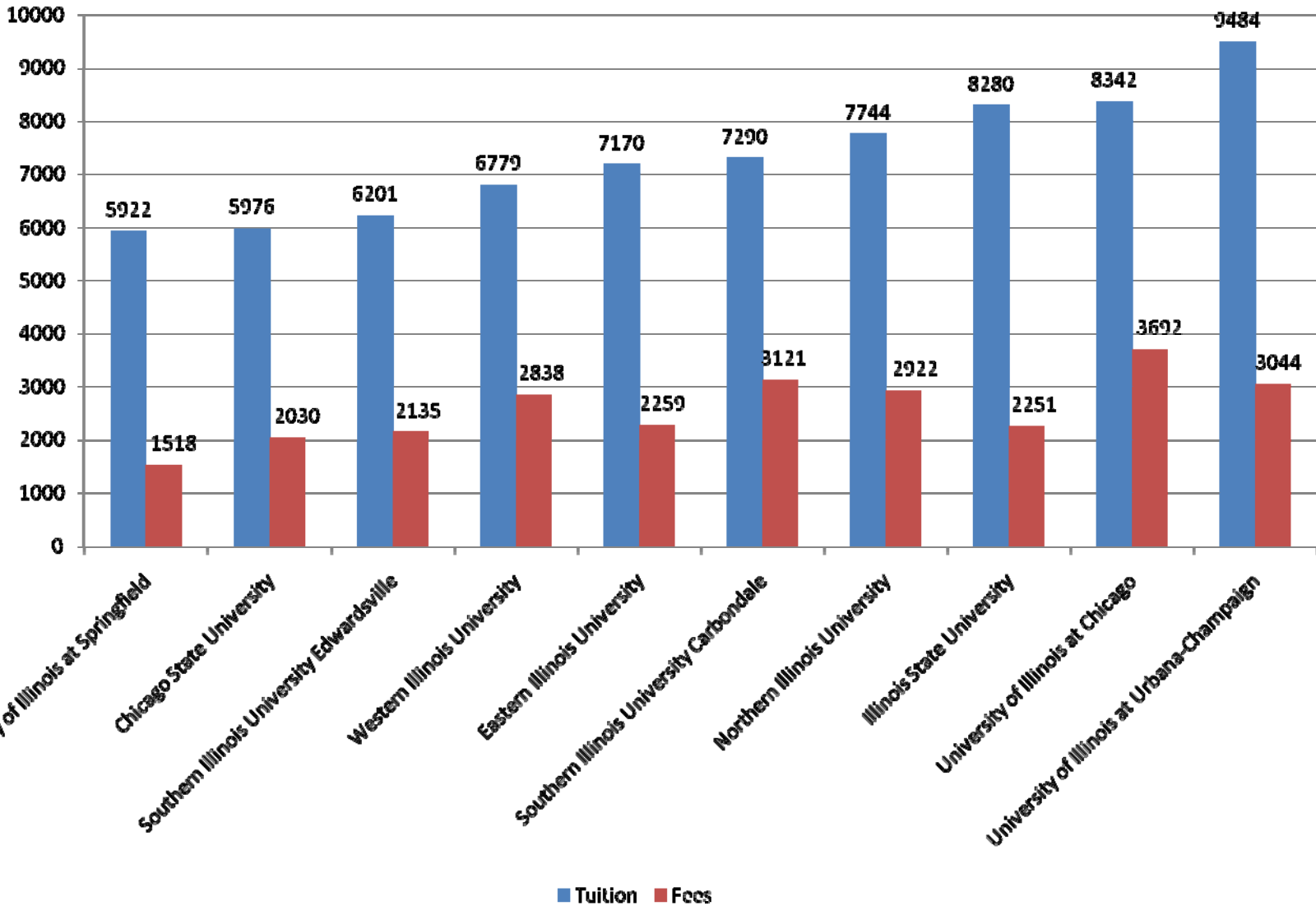
Carbondale Campus Staffing Trends Fall 2002 to Fall 2009



Tuition and Fees Fall 2009



Tuition and Fees



Average salaries of full-time instructional staff equated to 9-month contracts, by academic rank: Academic year 2009-10	SIUC	III. Pubs			
Professor	99,894	90,110			
Associate professor	73,068	70,901			
Assistant professor	61,716	62,646			